

Hans Erik Mathiesen

SCULPTURE IN THE
PARTHIAN EMPIRE

Hans Erik Mathiesen

SCULPTURE
IN THE PARTHIAN EMPIRE

A Study in Chronology

II · CATALOGUE



AARHUS UNIVERSITY PRESS

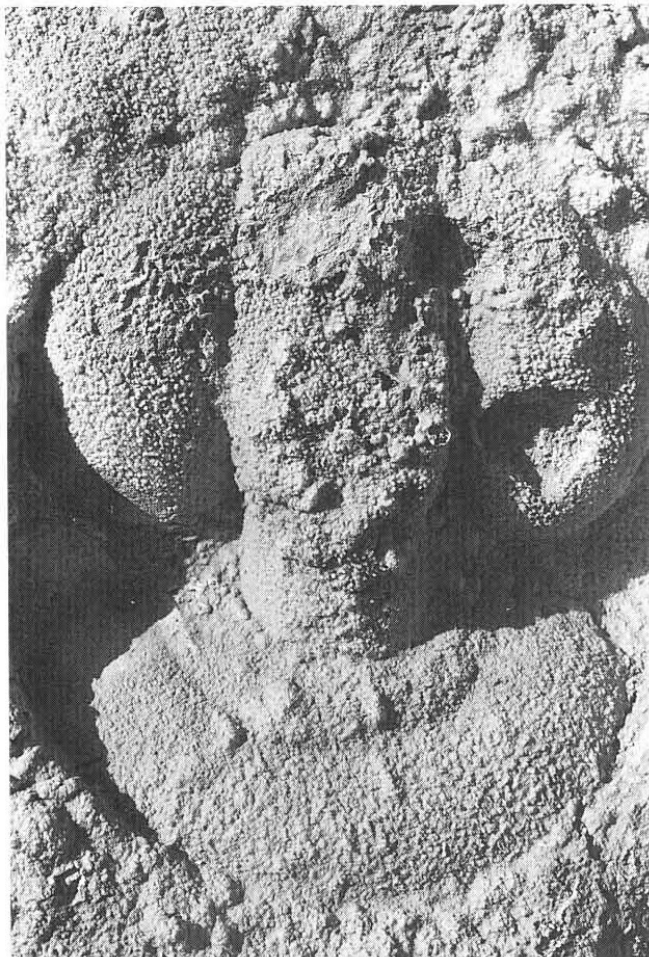


Fig. 32. Cat. no. 99. Relief from Qaleh-i Yazdigird (photograph by courtesy of E.J. Keall).

Cat.nos. 99-134.

Qaleh-i Yazdigird.

The site of Qaleh-i Yazdigird is particularly known for its decorative architectural stucco reliefs, made partly in moulds, partly carved by hand, and thereafter painted. The moulds may have been imported or, what may seem rather more natural, have been manufactured at Qaleh-i Yazdigird by craftsmen called in.

The reliefs come from a series of buildings, forming a palace which was erected in the last years of the Parthian period but remained in use in Sasanian times.¹ The reliefs, which were applied to the walls, represent patterns of a geometric or architectural nature and scenes with figures, and only the latter have been included in the catalogue.

1. Herrmann 1977, 67f; *idem* 1980, 278-283. Keall 1967, dated the reliefs to the Sasanian period, but now places them in the Late Parthian period, Keall 1976; *idem* 1977 and 1989; Keall, Leveque and Willson 1980. Kröger 1982, 257, proposes the 2nd-3rd centuries AD. Mathiesen 1988, 210; *idem* 1989, 124f, the 220s AD for the erection of the palace.

Cat.no. 99.

Fig. 32.

Qaleh-i Yazdigird, relief, male bust. Stucco.

H of bust c. 0.24 m.

Frontal male bust placed in a roundel. The figure has large bunches of hair at the ears and may be wearing a headpiece bound with a diadem.¹

1. Hermann 1977, 68; Keall, Leveque and Willson 1980, 37, fig. 6,1; pl. Xb. QY 76.A95.

100.

Qaleh-i Yazdigird, relief, female bust. Stucco.

H 0.115 m.

Frontal female bust placed in a roundel. The head is missing. Folds of drapery are shown in sharp-cut V-shape.¹

1. Keall, Leveque and Willson 1980, 37, fig. 6,2. QY 76.A72.

101.

Qaleh-i Yazdigird, relief, female bust. Stucco.

H c. 0.24 m.

Bust of the same type as cat.no. 100.¹

1. Keall, Leveque and Willson 1980, 37, fig. 6.3. QY 78.A51.

102.

Qaleh-i Yazdigird, relief, bust. Stucco.

H c. 0.08 m.

A roundel contains a male (?) bust. The hair is gathered in two bunches at the sides of the frontal face.¹

1. Keall, Leveque and Willson 1980, 37, fig. 7.3; pl. XVc. QY 78.A49.

103.

Qaleh-i Yazdigird, relief, bust. Stucco.

H c. 0.07 m.

A roundel contains a frontal bust.¹

1. Keall, Leveque and Willson 1980, 37, fig. 7.6. QY 78.A23.

104.

Qaleh-i Yazdigird, relief, bust. Stucco.

H c. 0.10 m.

A female (?) bust is placed in a lozenge frame. The hair falls in ringlets at the sides of the face and neck.¹

1. Keall, Leveque and Willson 1980, 37, fig. 7.7; pl. XIXa. QY 76.A45.

105.

Qaleh-i Yazdigird, relief, bust. Stucco.

H c. 0.11 m.

A lozenge frame contains a frontal bust.¹

1. Keall, Leveque and Willson 1980, 37, fig. 7.8. QY 76.A84.

106.

Fig. 33.

Qaleh-i Yazdigird, capital with female head. Stucco.

H of head c. 0.14 m.

On a capital of Corinthian type with acanthus scrolls there is a relief of a frontal female head.¹ Along the sides of the face there are long ringlets. At the forehead there are roll-curly. The eyes slant down somewhat towards the sides of the face.

1. Keall, Leveque and Willson 1980, 37, fig. 7.2; pl. XVIIIa. QY 78.A50.

107.

Qaleh-i Yazdigird, capital or part of column with busts. Stucco.

H of busts c. 0.14 m

Two frontal male busts in relief have been placed on a curving surface which may have been part of a column or a capital.¹

1. Keall, Leveque and Willson 1980, 37, fig. 7.1. QY 76.A69.

108.

Qaleh-i Yazdigird, capital with entwined beasts. Stucco.

H of beasts c. 0.22 m.

On the capital of Corinthian type there is a relief of two entwined winged beasts.¹

1. Herrmann 1977, 71; Keall, Leveque and Willson 1980, 39, fig. 13.1; pl. Xa. QY 76.A292 and A96.

109.

Qaleh-i Yazdigird, capital with man holding fishes. Stucco.

H of man c. 0.30 m.

On a capital of Corinthian type is a relief of a frontally standing naked man flanked by two fishes, the tails of which he grasps.¹

1. Herrmann 1977, 72; Keall, Leveque and Willson 1980, 39, fig. 13.2. QY 76.A116.

110.

Fig. 34.

Qaleh-i Yazdigird, capital with female head. Stucco.

H c. 0.17 m.

On a capital of indeterminable type is a relief of a female head, similar in type to cat.no. 106.¹

1. Keall, Leveque and Willson 1980, 37, fig. 7.5; pl. XVIIIb. QY 78.A40.



Fig. 33. Cat. no. 106. Figural capital from Qaleh-i Yazdigird (photograph by courtesy of E.J. Keall).



Fig. 34. Cat. no. 110. Figural capital from Qaleh-i Yazdigird (photograph by courtesy of E.J. Keall).



Fig. 35. Cat. no. 115. Half-column with reliefs from Qaleh-i Yazdigird (photograph by courtesy of E. J. Keall).

111.

Qaleh-i Yazdigird, capital with female bust. Stucco. Fragments of capitals of Corinthian type decorated with reliefs of female busts.¹

1. Herrmann 1977, 71; Keall, Leveque and Willson 1980, 39, fig. 14,1-5. QY 76.A77, A44, A67, A75, A78.

112.

Qaleh-i Yazdigird, arch with animal frieze. Stucco. H of animals c. 0.12 m. Rounded arch with a procession of a humped bull and griffins in relief. The head of the bull is frontal, the griffins' in profile.¹

1. Keall, Leveque and Willson 1980, 39, fig. 15,1-4. QY 76.A16, A18, A20.

113.

Qaleh-i Yazdigird, arch with animal frieze. Stucco. Fragment of a rounded arch with griffins in relief.¹

1. Keall, Leveque and Willson 1980, 39, fig. 16,2ab. QY 76.A124.

114.

Qaleh-i Yazdigird, flat arch with animal frieze. Stucco.

H of animals 0.11 m.

Fragment of a flat arch with reliefs of a pair of addorsed, half-rampant griffins, one of which attacks a deer.¹

1. Keall, Leveque and Willson 1980, 39, fig. 16,1ab. QY 76.A119.

115.

Fig. 35.

Qaleh-i Yazdigird, half-column with figures. Stucco. H of figures c. 0.33 m.

Fragments of a triple-faceted half-column divided into panels each containing a relief figure:¹ 'Pan' moving right. His head is rendered in profile (?), his chest is frontal, his legs in profile.

Standing naked female leaning the left elbow on a pedestal. Her right hand is raised to her forehead. Her left leg is flexed across the front of her right leg, her right foot foreshortened, and her left in profile. Her body is frontal, while her head is in profile.

Draped female standing frontally. There are vertical drapery folds in the area between her legs, but horizontal folds on the legs proper. Her head was probably frontal. Her left hand is on her left hip. The position of her right arm is unknown.

Standing draped male figure. The person, who wears a belted tunic and trousers and a pointed headpiece with flaps at his ears, has his right leg flexed in across his left one. His left foot is foreshortened, his right is in profile. Head and body are frontal. His left hand is on his left hip. His right hand is raised and held at the side of his head. There are V-folds on his chest and U-folds on each thigh and on the upper part of the trousers. The lower part of the trousers and the sleeves are decorated with a zig-zag pattern.

1. Herrmann 1977, 70, 71; Keall, Leveque and Willson 1980, 38, fig. 11,1-5; pl. XIc. QY 76.A38, A253, A113, A88, A41, A118.

116.

Fig. 36.

Qaleh-i Yazdigird, half-column with figures. Stucco. H of figures c. 0.15 m.

Fragments of a half-column divided into panels each containing a relief of an animal or a naked male figure. The body of the male who thrusts a spear at the animal is rendered in three-quarter profile from the rear. His head is in 'normal' three-quarter profile. The animal—a lion, or more likely a boar—sits on its haunches and raises one foreleg.¹

1. Herrmann 1977, 70; Keall, Leveque and Willson 1980, 38f, fig. 12,1-2; pl. Xc. QY 76.A117, A58.

117.

Fig. 37.

Qaleh-i Yazdigird, relief, winged figure. Stucco. H c. 0.42 m.

A winged and naked boy, 'Eros', stands frontally and leans his left elbow on a pedestal. His hand is covered by drapery. His right hand is placed on his left shoulder. His head is slightly tilted, but frontal. His left leg crosses his right leg.¹

1. Herrmann 1977, 72; Keall, Leveque and Willson 1980, 37, fig. 8,1-2; pls. XIXd, XIa. QY 76.A48, A93.

118.

Qaleh-i Yazdigird, relief, head. Stucco. H c. 0.10 m. Frontal male (?) head.¹

1. Keall, Leveque and Willson 1980, 37, fig. 7,4. QY 76.A136.



Fig. 36. Cat. no. 116. Half-column with reliefs from Qaleh-i Yazdigird (photograph by courtesy of E. J. Keall).

119.

Qaleh-i Yazdigird, relief, winged figure. Stucco. H of figure c. 0.22 m.

Standing draped and winged female, interpreted as Nike,¹ in a rectangular panel. Her head is tilted and shown in three-quarter profile.

1. Keall, Leveque and Willson 1980, 38, fig. 10,5. QY 76.A284.

120.

Qaleh-i Yazdigird, relief, 'inhabited vine'. Stucco. H c. 0.25 m.

Fragment of 'inhabited vine' with a person with arms raised.¹

1. Keall, Leveque and Willson 1980, 38, fig. 10,6; pl. XVb. QY 76.A139.

121.

Qaleh-i Yazdigird, relief, 'inhabited vine'. Stucco. H of figure c. 0.14 m.

Fragment of 'inhabited vine' with kneeling person who raises both hands above his head.¹

1. Keall, Leveque and Willson 1980, 38, fig. 10,7. QY 76.A57.

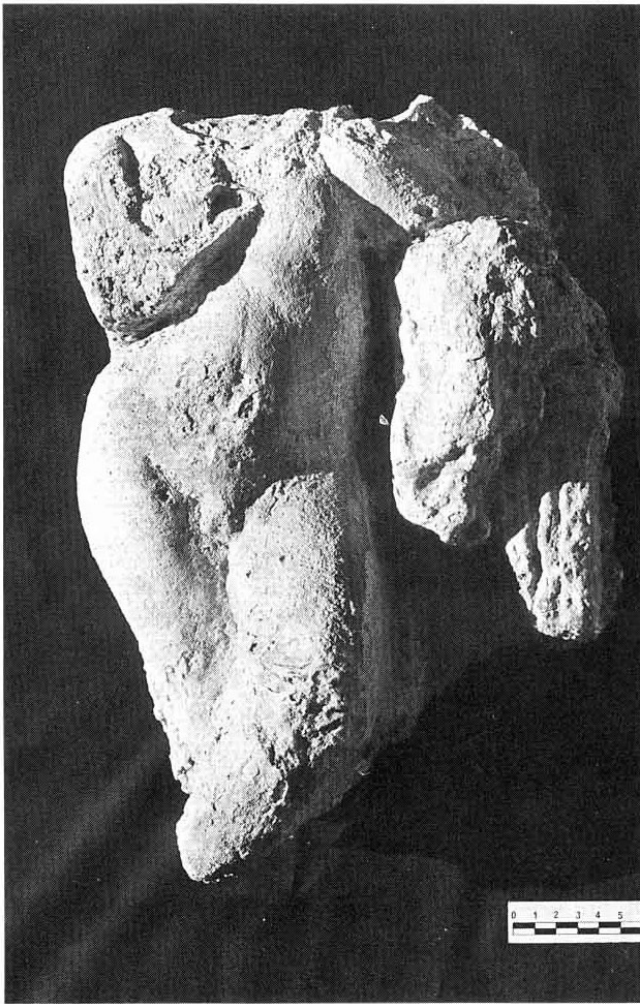


Fig. 37. Cat. no. 117. Relief from Qaleh-i Yazdigird (photograph by courtesy of E.J. Keall).

122.

Qaleh-i Yazdigird, relief, 'inhabited vine'. Stucco.
L of figures c. 0.25 m.
Fragment of 'inhabited vine'. One figure gathers the grapes, another reclines on his left elbow and reaches for them with his right hand.¹

1. Keall, Leveque and Willson 1980, 37, fig. 8,3-4. QY 76.A74, A71.

123.

Qaleh-i Yazdigird, relief panel. Stucco.
H c. 0.21 m.
Panel with Corinthian column, crenellation with arrow pattern, vase and part of a winged figure.¹

1. Keall, Leveque and Willson 1980, 38, fig. 10,1. QY 76.A43.

124.

Qaleh-i Yazdigird, relief panel. Stucco.
H c. 0.19 m.
Panel with crenellation with arrow pattern, Corinthian column and winged female figures in profile.¹

1. Keall, Leveque and Willson 1980, 38, fig. 10,2. QY 76.A25. The fragment probably derives from the same frieze as cat.no. 123.

125.

Qaleh-i Yazdigird, relief panel. Stucco.
H c. 0.32 m.
Part of a panel or frieze with two dancing (?) nude female figures. The one on the left has a heavy ring round her neck. Her head is rendered in profile.¹

1. Keall, Leveque and Willson 1980, 38, fig. 10,3. QY 76.A7.

126.

Qaleh-i Yazdigird, relief panel. Stucco.
H 0.13 m.
Part of a panel with crenellation with an arrow pattern flanked by two vases. Below may be part of a wing.¹

1. Keall, Leveque and Willson 1980, 38, fig. 10,4. QY 76.A252. This fragment apparently comes from a frieze of the same type as cat.nos. 123, 124.

127.

Qaleh-i Yazdigird, relief panel. Stucco.
H of figures c. 0.19 m.
Part of a panel with two nude winged boys, 'cupids', sporting with the tail and head of a panther-like animal. The bodies are foreshortened, and the heads may be in three-quarter profile.¹

1. Keall, Leveque and Willson 1980, 37, fig. 9,1ab; pl. XIb. QY 76.A49.

128.

Qaleh-i Yazdigird, relief panel. Stucco.
H 0.24 m.
Fragment of the legs of a naked male figure. His left leg is bent, his foot in profile. His right leg is stretched out behind him.¹

1. Keall, Leveque and Willson 1980, 37, fig. 9,2. QY 76.A52.

129.

Qaleh-i Yazdigird, relief panel. Stucco.

H c. 0.28 m.

Fragment of an animal, perhaps a sphinx, sitting with its haunches in profile and forepart frontal.¹

1. Keall, Leveque and Willson 1980, 39, fig. 12.3. QY 76.A243.

130.

Qaleh-i Yazdigird, relief panel. Stucco.

H c. 0.24 m.

Sphinx (?) rendered frontally.¹

1. Keall, Leveque and Willson 1980, 39, fig. 12.5. QY 76.A36.

131.

Qaleh-i Yazdigird, relief panel. Stucco.

H c. 0.22 m.

Fragment with an indeterminable representation, perhaps a nude female figure carried by a hybrid creature. A nereid mounted on a sea-monster (?).¹

1. Keall, Leveque and Willson 1980, 39, fig. 12.4. QY 76.A68.

132.

Qaleh-i Yazdigird, relief panel. Stucco.

H c. 0.34 m.

Fragment with protomes of griffins.¹

1. Herrmann 1977, 72; Keall, Leveque and Willson 1980, 40, fig. 17,1-3; pl. XXab. QY 76.A76, QY 78.A22, A60.

133.

Qaleh-i Yazdigird, relief panel. Stucco.

H c. 0.16 m.

Fragment with head of antlered deer, grasped by hand (?).¹

1. Keall, Leveque and Willson 1980, 39, fig. 16.3. QY 76.A209.

134.

Qaleh-i Yazdigird, relief panel. Stucco.

H c. 0.11 m.

Fragment of half-rampant griffin.¹

1. Keall, Leveque and Willson 1980, 39, fig. 16.4.